



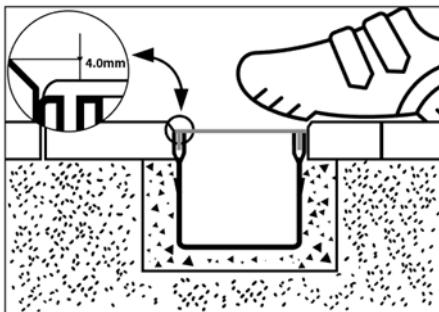
## Installation instructions PCK Aqua Drain 100/100.

### Aqua Drain 100/100 drainage channel with grating.

The Aqua Drain 100/100 is a drainage channel that consists of a plastic (PVC) channel element with an aluminum design grate. This drainage channel is used around the home, in areas with no traffic. For example, you can drain the water from the Aqua Drain 100/100 drainage channel to the sewer or infiltration system. This can be done via a side or bottom spout.

Furthermore, by draining the water into an infiltration system, you work sustainably and improve the water balance of the soil.

1. The Aqua Drain 100/100 has the option of a side or bottom spout. The side spout is integrated in the end plate, the bottom spout is integrated in a connecting piece. For the bottom spout, you need to drill a  $\varnothing 45$  until 90mm hole in the bottom of the drainage channel using a hole saw. To do this, carefully determine where you want to place the connection coupling piece.

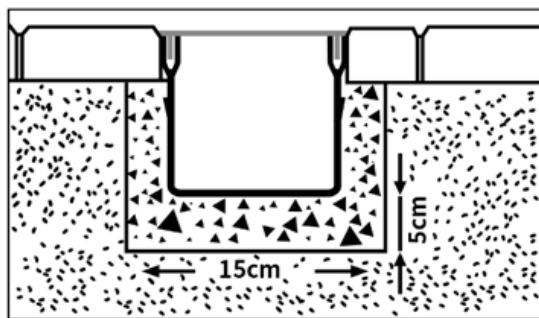


#### Attention:

Connect a maximum of 6 meters of Aqua Drain 100/100 drainage channels to a bottom spout and a maximum of 5 meters to a side spout. You can prevent odors by installing a siphon when connecting to the wastewater sewer.

2. Make a trench of approx. 15 cm deep for the foundation. The foundation must have minimum dimensions: 5 cm high and 10 cm wide.

3. Apply stabilized sand in the trench in the ratio 1 : 3 (cement : sand). Adjust the mixture to the desired height. Click the connecting pieces around the channel elements and adjust to the correct height. Fill the trench to the bottom of the pavement with sand cement. Always leave the grate in the channel element!
4. Carefully compact the foundation strip around the channel, leaving the channel in its original form.



**TIP:**

- ✓ With new paving, we advise you to tension a wire to determine the height level. Always set the grate 4 mm below the wire.
  - ✓ If you install the channel in existing paving, we advise you to make a wooden template with the desired height, which you can strike off.
  - ✓ When the channel is laid along an upright wall, the flaps of the connecting piece must be cut off on that side.
5. You can shorten the channel with grate to any length you desire with a saw.
  6. The end plates are attached to the ends of the channel. Due to the difference in the expansion coefficient of plastic (channel) and aluminum (grate), it is possible that the length of the channel differs slightly from the length of the grate.
  7. All plastic parts can be connected to each other in a waterproof manner using PVC glue.
  8. Depending on the chosen paving, the channel on the side can be supplemented with street sand or stabilized sand.
  9. Max flow rate: 400L/m.